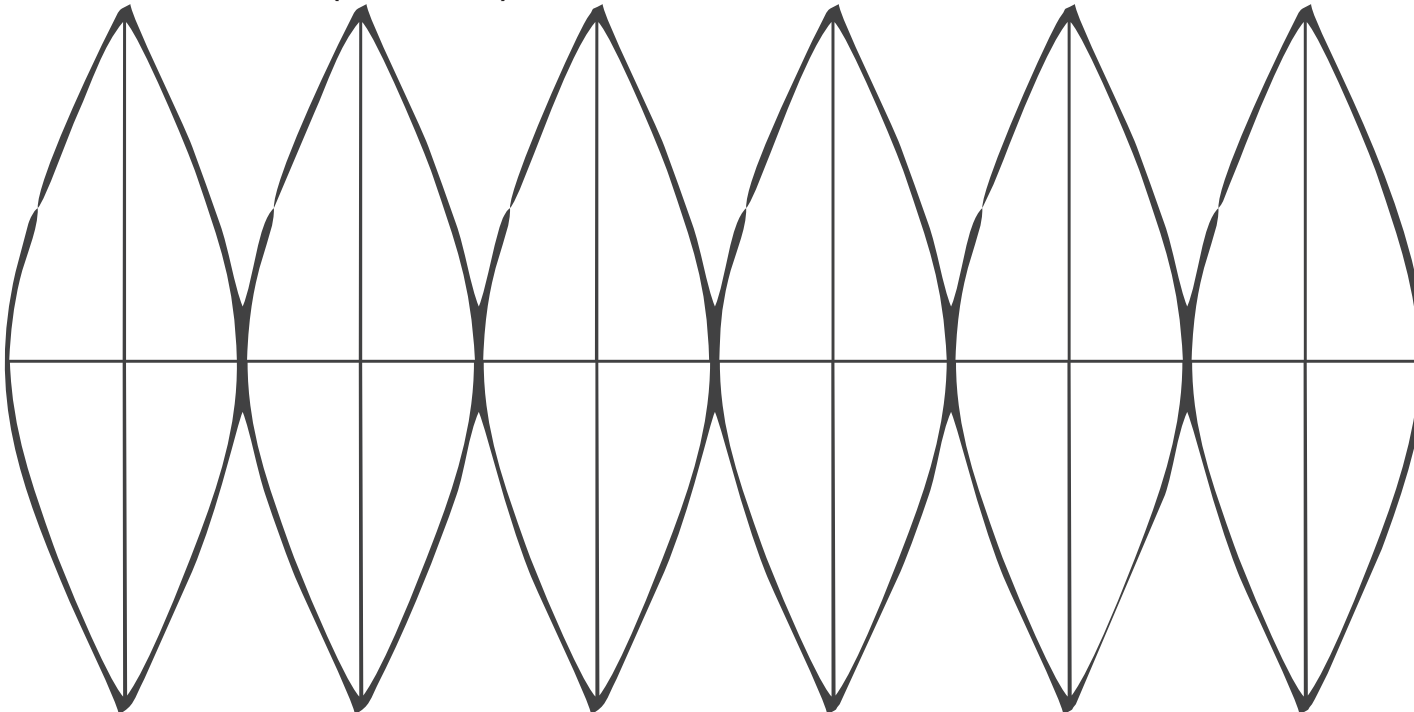


1.47" diameter = 5" circumference

Maria's sphere-covering patterns

60mm (2.36 in.) diameter = 7.41" circumference

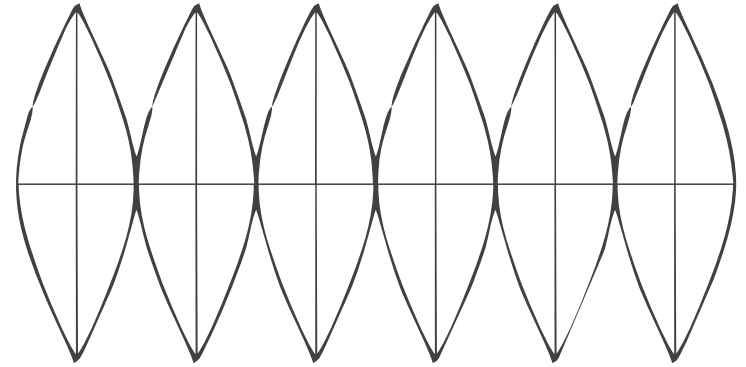


$$c = 2\pi r \text{ or } c = \pi d$$

($\pi=3.14$)

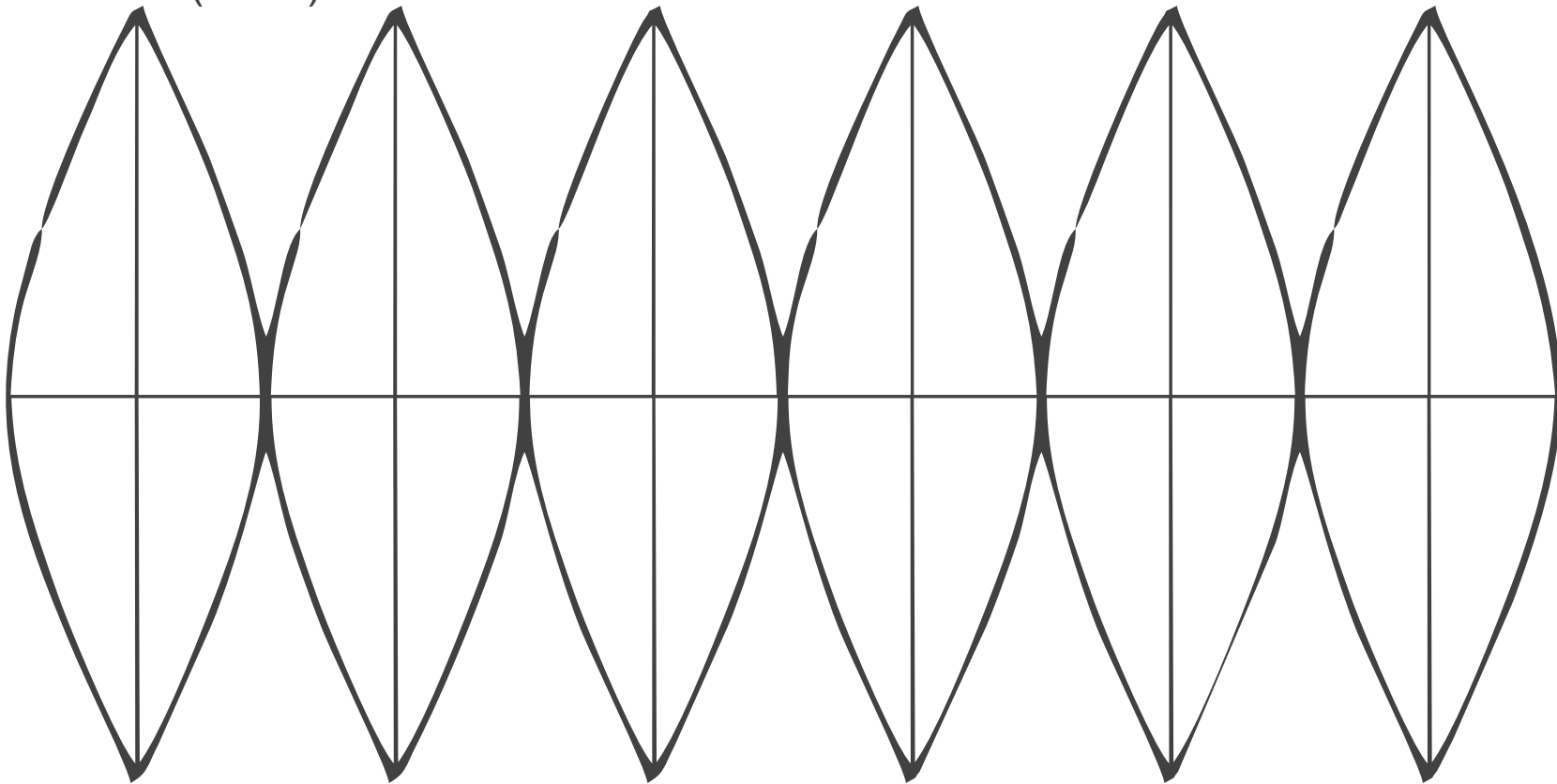
$$c = 2\pi r \text{ or } c = \pi d$$

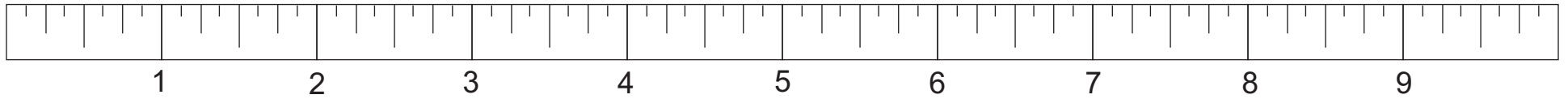
($\pi=3.14$)



1.2" diameter = 3.75" circumference

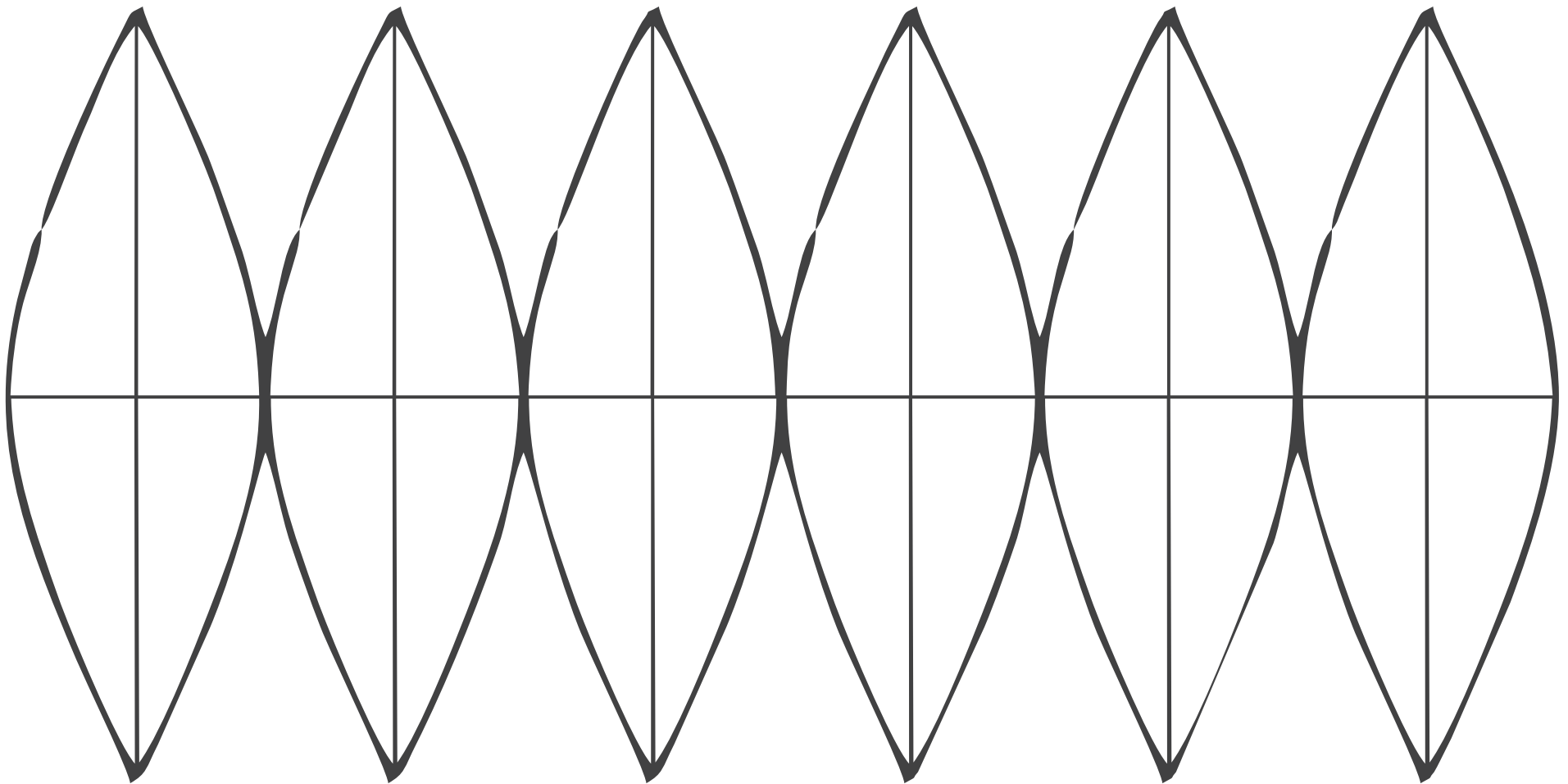
70mm (2.75") diameter = 8.63" circumference

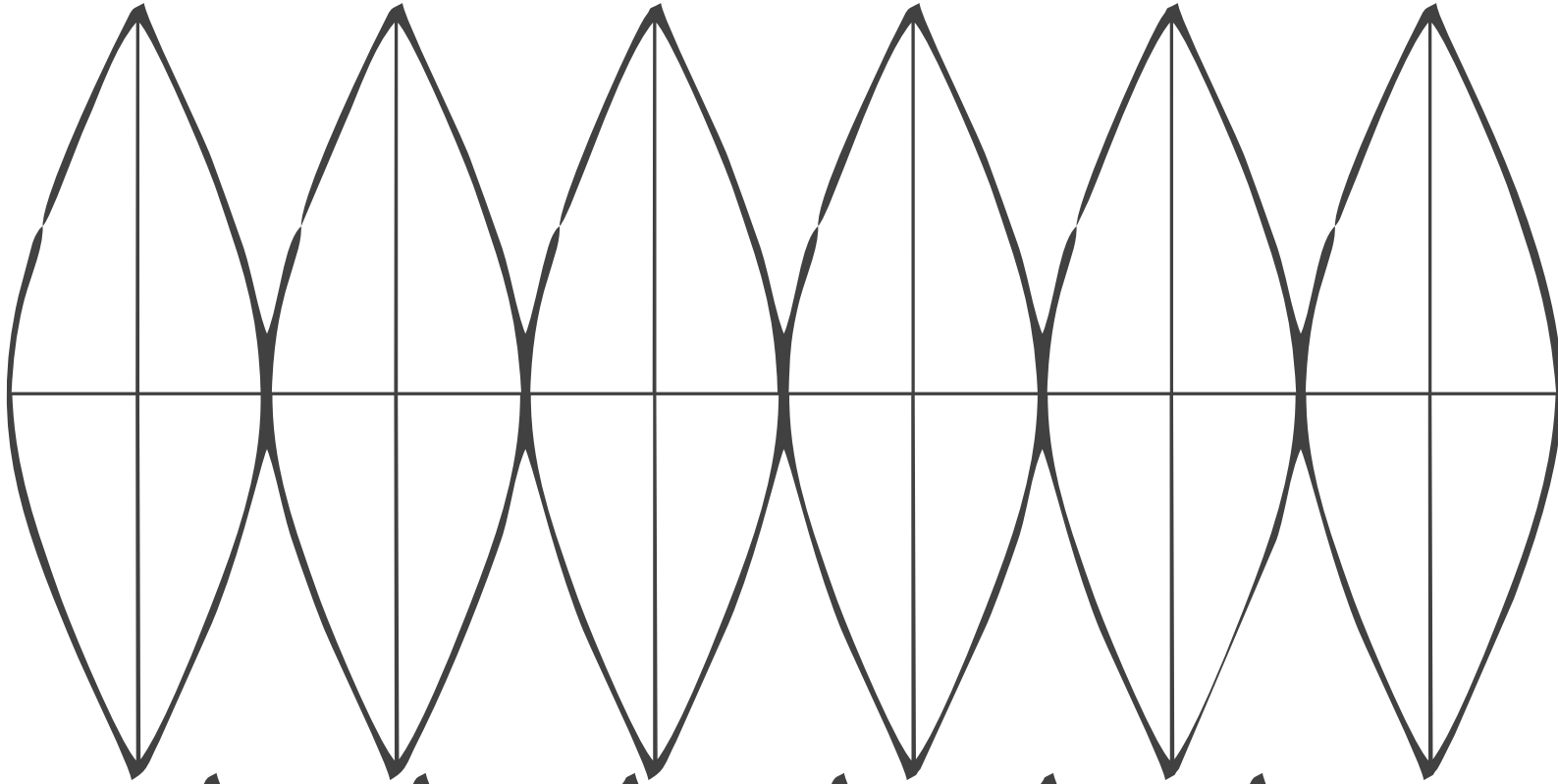




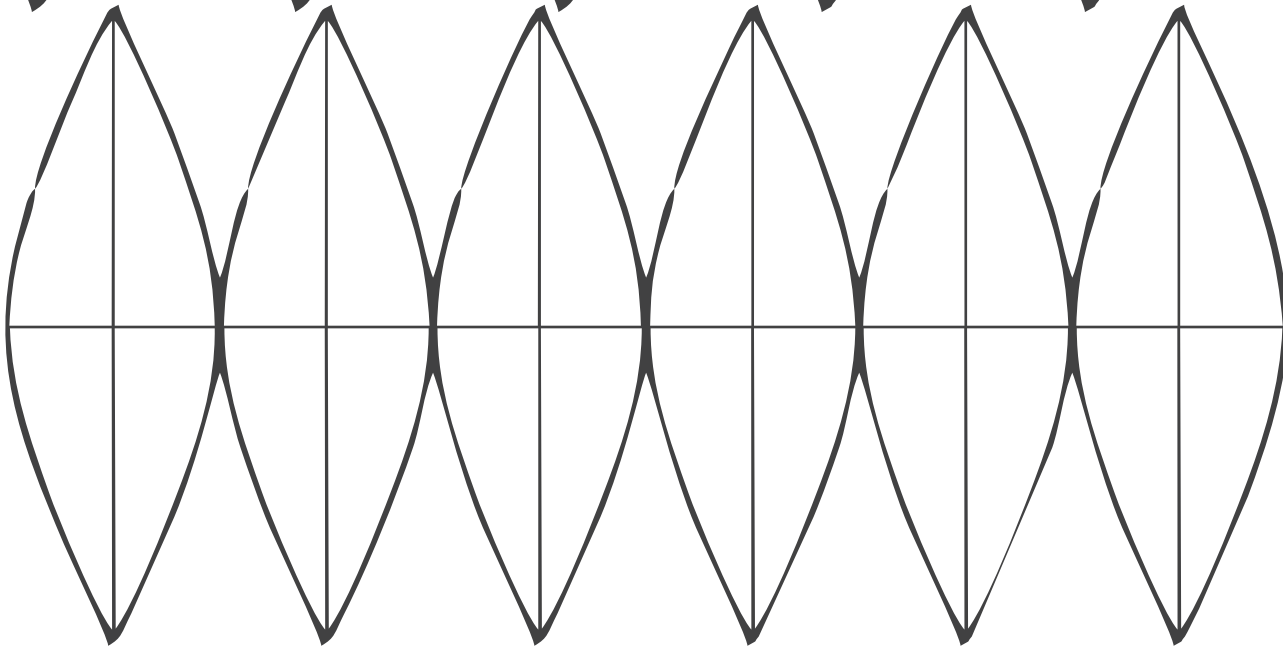
$c = 2\pi r$ or $c = \pi d$
($\pi=3.14$)

80mm (3.15") d = 9.89" circumference





2.62" d =
8.25" circumference



$c = 2\pi r$ or $c = \pi d$
($\pi=3.14$)

2.15" d =
6.75" circumference